



PIERRE LEGRAIN
EILEEN GRAY

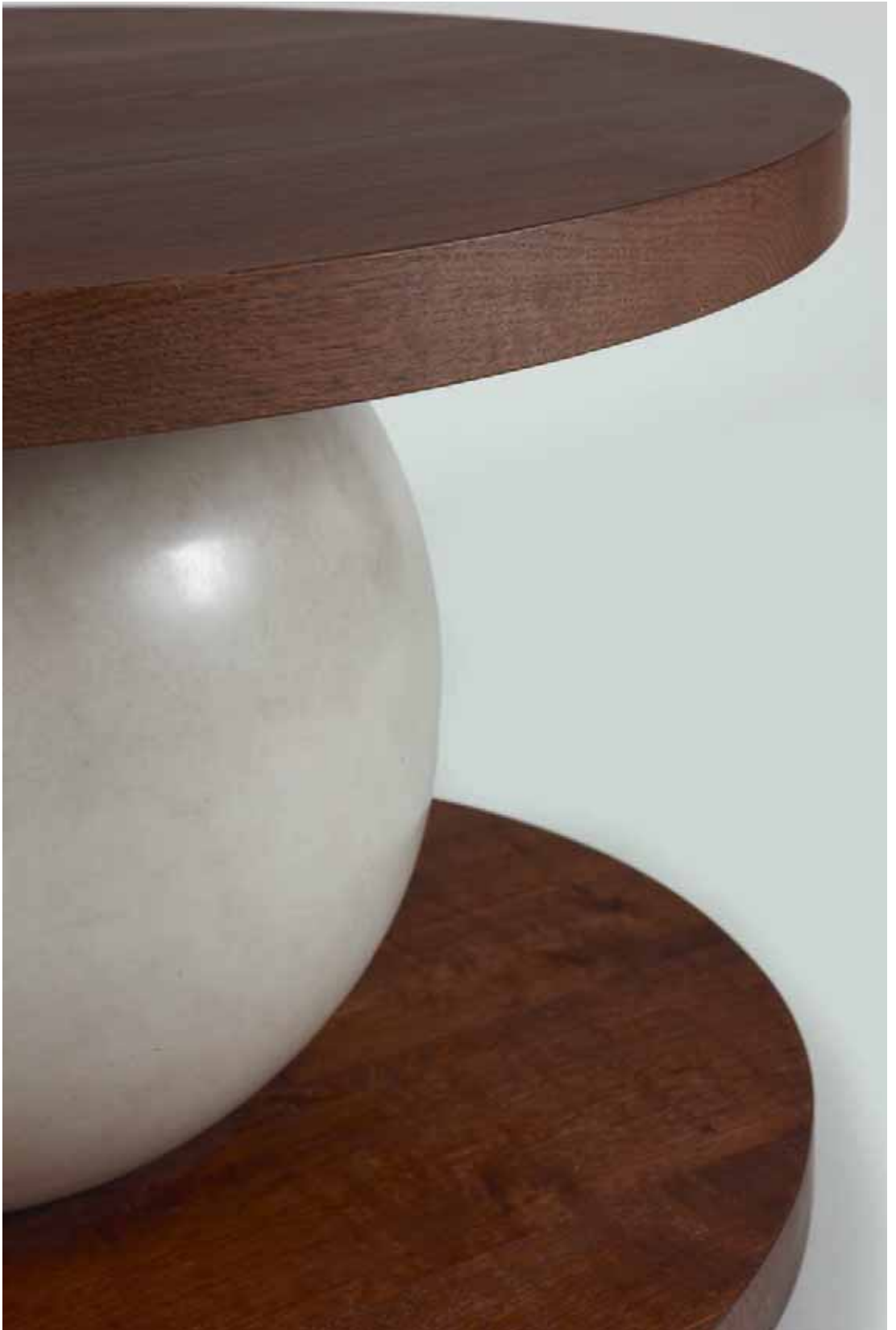


PIERRE LEGRAIN

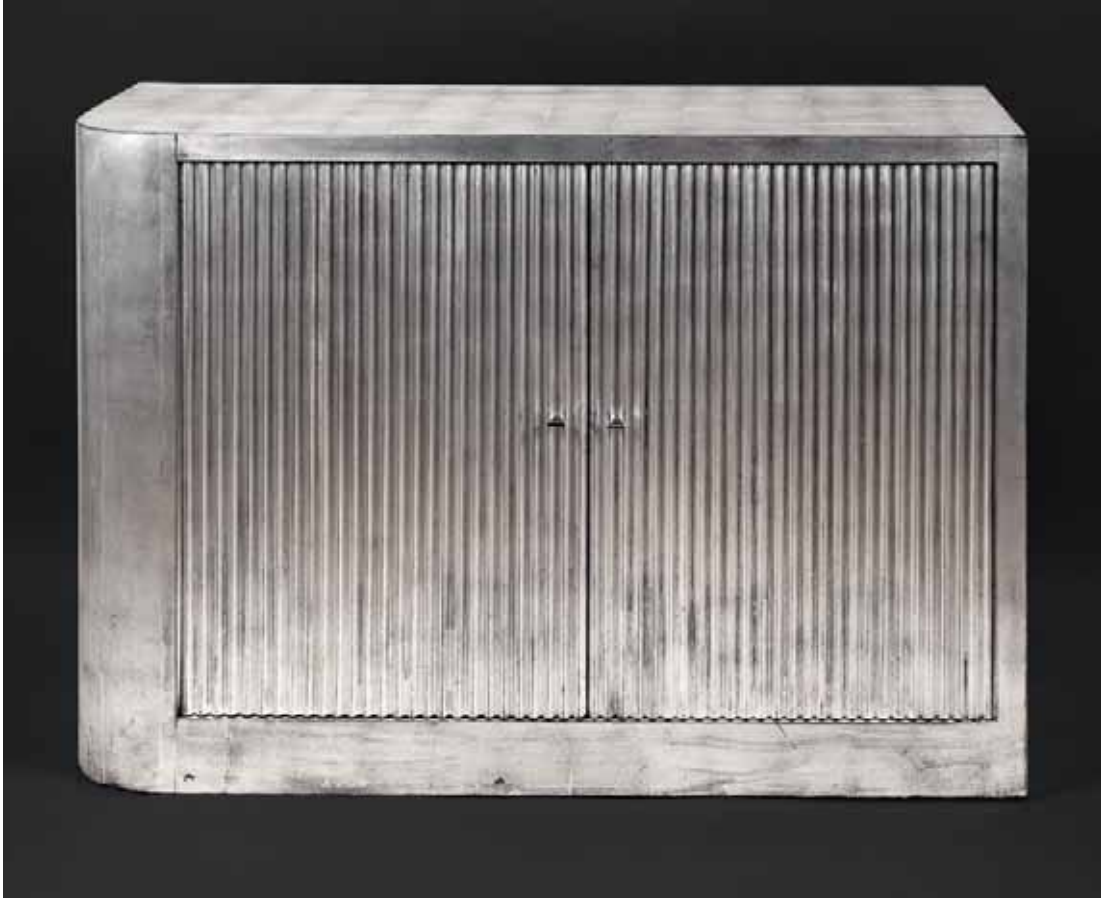
EILEEN GRAY

15 septembre au 15 octobre 2010



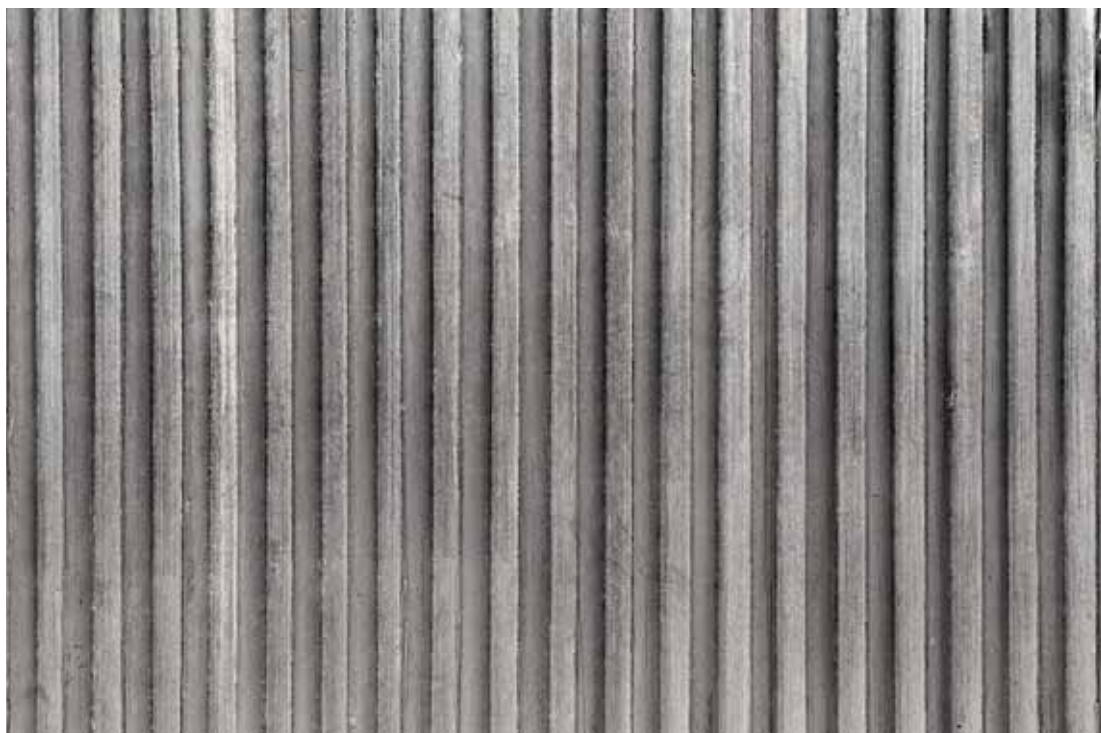












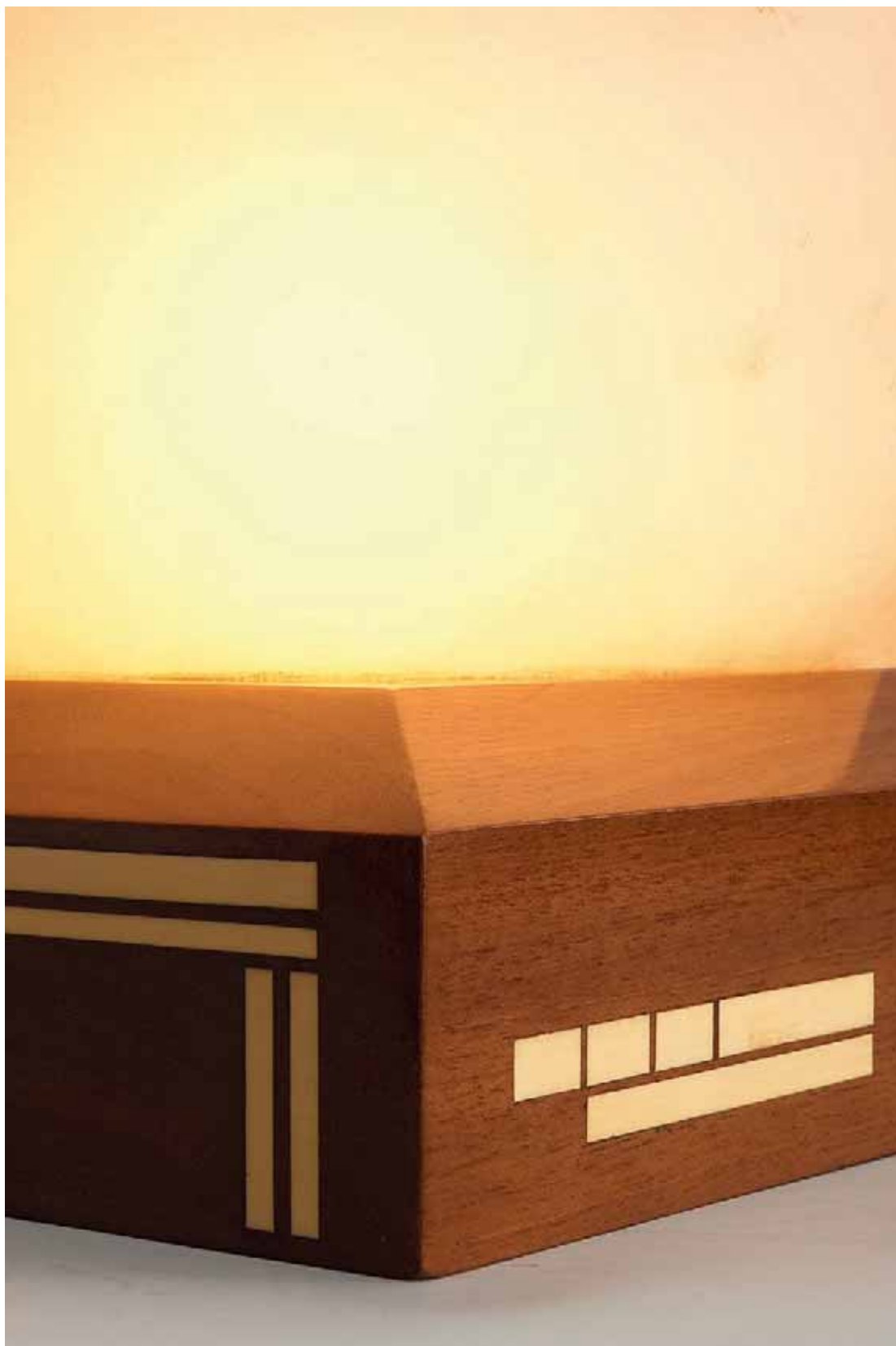


























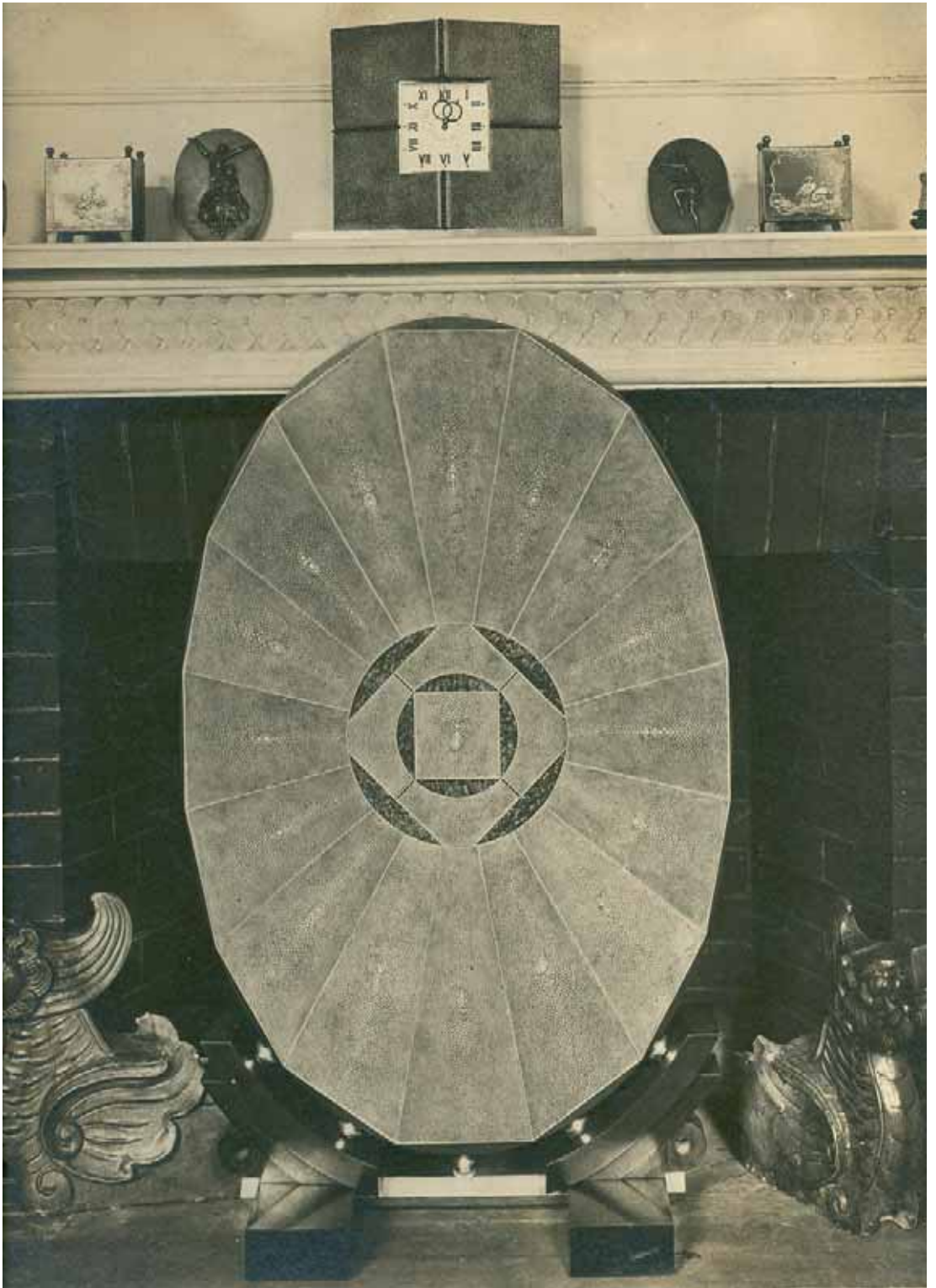






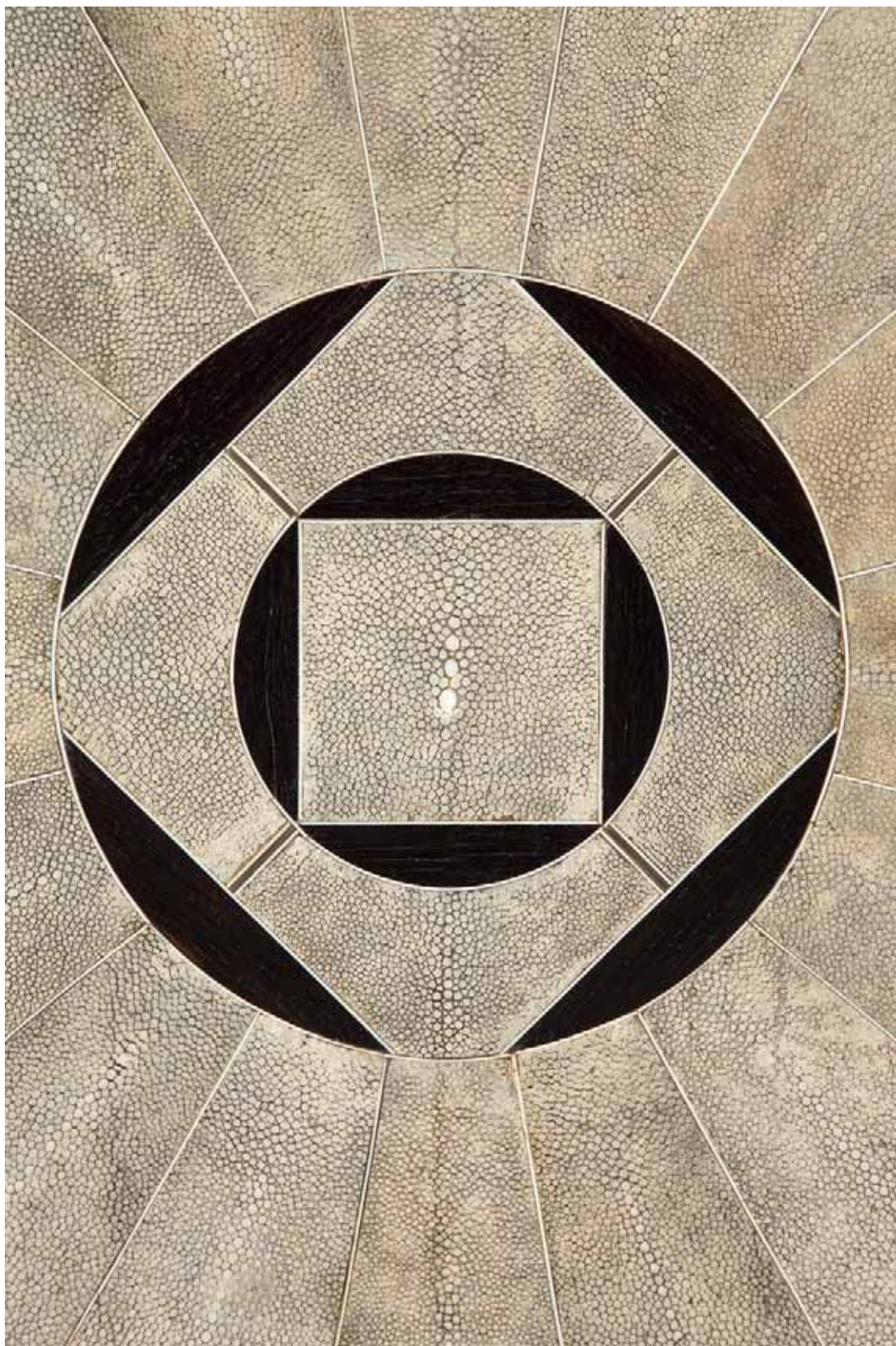


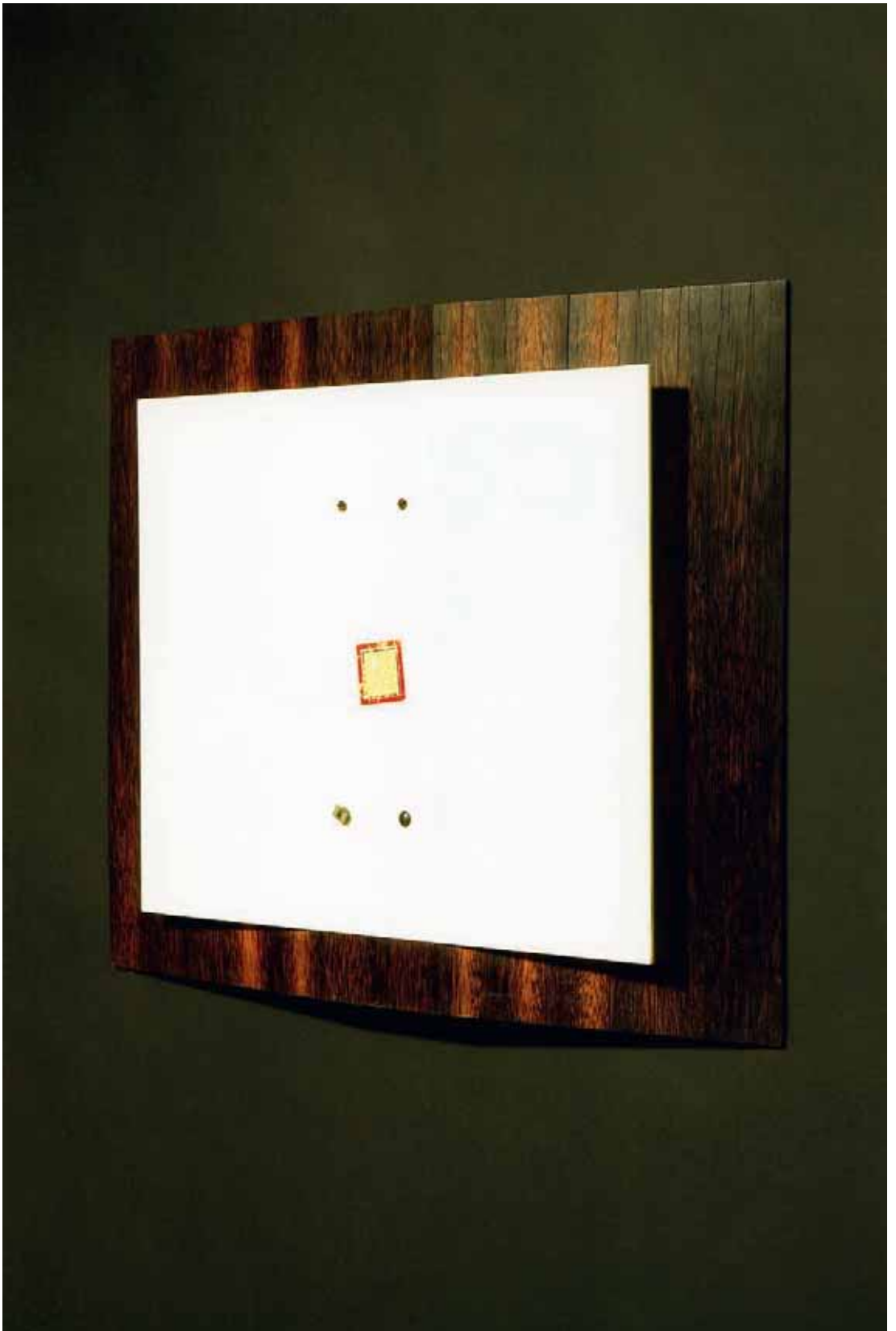




















© Archives Legrain



© Archives Legrain



© Archives Legrain



© Archives Legrain



© Archives Legrain



© Archives Legrain



© Archives Legrain



© Archives Legrain



© Archives Legrain



© Archives Legrain



© Archives Legrain



© Archives Legrain











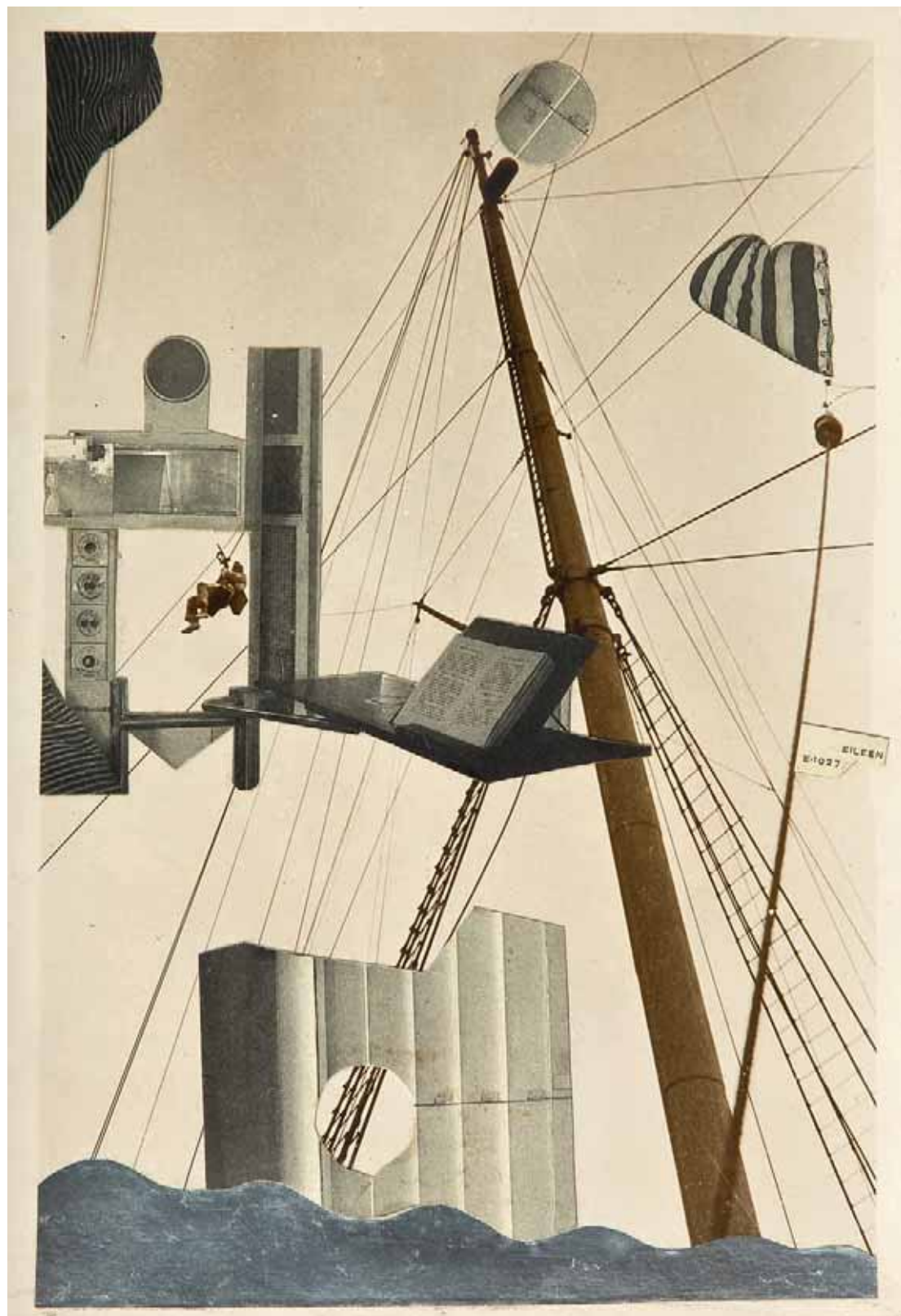








EILEEN E-1027



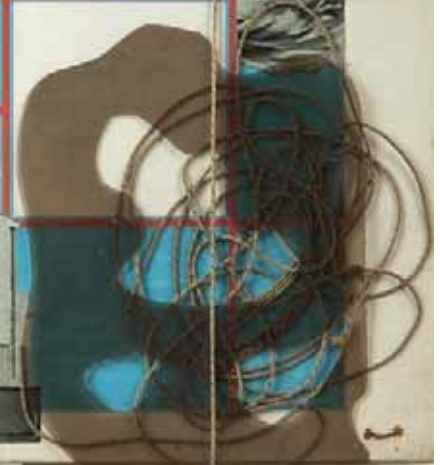
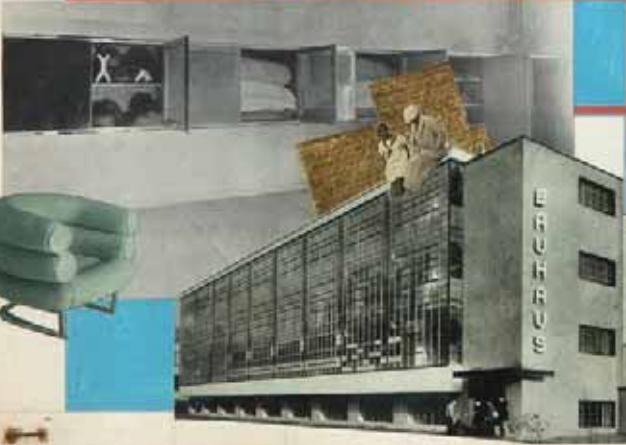
MISS E. GRAY T3-15

T3-15



BAUHAUS T4-6

74-6



RUE LOTA T3-10

T3-10



E-1027 T3-12

T3-12



TEMPE A PAILLA T4-7

T4-7



Parce que, descendit des Alpes
et des torrents par une
cascade de glace qui tombent



TEMPE A PAILLA T3-14

T3-14



E-1027 T3-18

T3-18



PIERRE LEGRAIN

Pages 4-5, *Low table with a circular oak top resting on a sphere lacquered white, circular base in oak.*

From Jeanne Tachard collection

Private collection

Height 19.69 in – Diameter 31.10 in

Pages 6-9, *Sideboard entirely silvered leaf, the doors fluted, the inside of which is veneered with mahogany, open onto twelve cubic compartments. Circa 1922.*

From Ms Boulanger collection

Private collection

Length 50.79 in – Width 16.73 in – Height 39.37 in

Pages 10-13, *A red lacquered coffee table consisting of four legs foot diamond.*

From private collection

Top 23.62 in x 23.62 in – Height 10.63 in

Pages 14-15, *A frosted glass lamp, a mahogany base with an ivory geometrical pattern, circa 1920.*

From Pierre and Marie Legrain collection

Jacques Antoine Legrain collection

Private collection

Height 17.32 in – Base 10.63 in x 10.83 in

Pages 16-19, *Modernist and cubist style armchair in solid palm wood, leather and bronze, set in front on two diamond-shaped legs with metal-cap feet. The rear legs shaped by a vertical panel sheathed in leather and attached to a Cubist-style base with square vanes.*

The saddle-leather covering of the seat, in bluish-black leather, with pressed cushion and, on the outside, worked in flat bellows. Twelve chromed screws, left exposed on purpose, punctuate the armrests and a frieze of silvered bronze triangles highlights the flat space of the back panel.

From Pierre and Marie Legrain

Private collection

Height 25.98 in – Width 23.62 in – Depth 19.69 in

Pages 20-21, *African seat in studded wood; Base and geometric pattern reworked and sculpted by Pierre Legrain.*

From Jeanne Tachard

Privat collection

Height 12.80 in – Width 21.85 in

Page 22, *A cream lacquered picture frame. Circa 1920*
From Ms Boulanger collection
Private collection
Height 33.07 in – Width 25.59 in

Page 23, *A blown gold glass spherical lamp; circa 1925*
From Pierre and Marie Legrain collection
Jacques Anthoine Legrain collection
Private collection
Height 8.66 in – Diameter 9.45 in

Pages 24-25, *A fireplace set; shovel, pair of pliers and brush in nickel-plated steel ornamented with spheres of yellow marble.*
From Jeanne Tachard collection
Height 50 cm

Pages 26-27, *A table lamp with egg-shaped, white blown, satin and frosted, glass shade; its rests on a square base with sections cut into silvered metal has four corner feet. The sides are decorated with turquoise, black, white, reddish-blue and jade enamel "champlevés". The repetition of the geometric motif is counter-balanced by chromatic variations.*
Enamel signature « G. Miklos ». The decoration bears the initials and date « GM 1922 ».
From private collection
Made to order by Pierre Legrain in collaboration with Gustave Miklos
Height 16.54 in – Base 10.83 in x 10.83 in

Pages 28-31, *An oval-shaped fireplace screen adorned with shagreen radiating marquetry enhanced with inlaid ivory fillets and ebony inlaid, veneered with Makassar at the back. Screen rests on a cubist base in ebony decorated with bar and spheres in silver lacquer work.*
From Mr Monbrison
Private collection
Height 39.37 in – Width 19.69 in

Pages 32-33, *Picture frame support made of palm wood and a pane of white opaline glass.*
From Pierre and Marie Legrain
Jacques Athoine Legrain collection
Private collection
Frame support 26.77 in x 26.77 in – Opaline glass 21.26 in x 26.38 in

Pages 34-35, *Curule chair with seat of black patina steel bars, adorned with geometric designs in cast pewter. Cushion is framed by two knobs in python skin dyed yellow. The rectangular base in ebony was curved using a gouge, and depicts in its center – which is carved out and plated with a steel bar – a metal panel with a geometric design of the Neo-plasticist style, enameled yellow, red and blue. The rectangular base, made of a thick steel plate with black patina, is adorned with geometric shapes of polished cast pewter and it is set on an ebony tier carved with a gouge. Situated in Paris and dated 1921.*
From privat collection
Length 36.81 in – Width 9.84 in – Height 14.96 in

EILEEN GRAY

Pages 44-45, *Suspended ceiling lantern with contoured cut-out shapes in bright red and lack lacquered wood. Two half ostrich eggs form the bulb shade and diffuser. Circa 1922.*

From private collection

Height 9.57 in – Height with cable 33.66 in

Pages 46-47, *Suspended ceiling lantern with contoured cut-out shapes, in black lacquered wood with bright red interior. Two half ostrich eggs form the bulb shade and diffuser. Circa 1922.*

From private collection

Height 12.6 in – Height with cable 39.4 in

Pages 48-49, *A table lamp with stem of two stylized and tapered, sculpted elements in polished ivory on a tiered rectangular base; overhanging ebony base; lampshade with metal frame and three parchment skins with a painted and perforated brown-tinted decoration on a natural background; parchment lines. Circa 1919-1925.*

From private collection

Height 23.03 in

Pages 50-51, *A brown lacquer bowl, circa 1920.*

From private collection

Diameter 7.48 in – Height 2.76 in

Pages 52-53, *EILEEN E-1027*

Mixed technique, circa 1935: collage, photograph, piece of aluminum paper, entitled: « Eileen- E-1027 ».

9.84 in x 6.69 in

From private collection

Pages 54-55, *MISS E. GRAY*

Mixed technique, circa 1935: collage, photograph, printed paper, entitled « MISS E. GRAY ».

Referenced under number T3-15

12.80 in x 9.84 in

From private collection

Pages 56-57, *BAUHAUS T4-6*

Mixed technique, circa 1930-35: collage, photograph, Rhodoïd, piece of string, piece of gilt metal paper and gouache; referenced under number T4-6

12.80 in x 9.84 in

From private collection

Pages 58-59, RUE LOTA T3-10

Mixed technique, circa 1935: collage, photograph, cut out of color paper; referenced under number T3-10

12.80 in x 9.84 in

From private collection

Pages 60-61, E-1027 T3-12

Mixed technique, circa 1935: collage, photograph, piece of aluminum paper, cut out of color paper. Referenced under number T3-12

12.80 in x 9.84 in

From private collection

Pages 62-63, TEMPE A PAILLA T4-7

Mixed technique, circa 1935: collage, photograph, gouache; referenced under number T4-7

12.80 in x 9.84 in

From private collection

Pages 64-65, TEMPE A PAILLA T3-14

Mixed technique, circa 1935: collage, photograph, gouache; referenced under number T3-14

12.80 in x 9.84 in

From private collection

Pages 66-67, E-1027 T3-18

Mixed technique, circa 1935: collage, photograph, cut out of color paper, gouache;

Referenced under number T3-18

13.78 in x 9.84 in

From private collection

I would like to thank Pierre Legrain's descendants
mister Goeffrey Renaud
mister Louis Geraud Castor
madam Joëlle Fonvielle
all the collectors who wished to remain anonymous
and more particularly mister Jean-Marcel Camard.

Galerie Willy Huybrechts
11 rue Bonaparte
75006 Paris
Tel / Fax : 01 43 54 29 29
wh@willy-huybrechts.com
www.willy-huybrechts.com

© Willy Huybrechts, 2010.

Photographers: Zarko Vijatovic et Stéphane Briolant



Galerie Willy Huybrechts
EXPERT S.F.E.P.